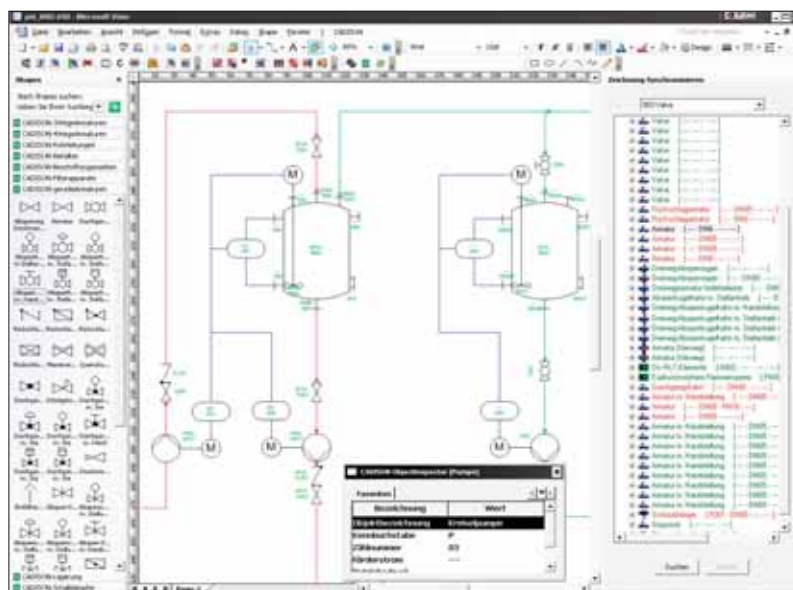


Certified processes require dedicated workflow management

KELSTERBACH, end of February (bv). The general engineering process with the new Release 9 of the plant design tool Cadison was in the centre of a well attended workshop organized by the ITandFactory GmbH (Bad Soden) close to the Frankfurt airport. At the end of 2009 Cadison R9 was released. The developing team did a really good job: this major-release offers a multitude of new and extendable functions allowing to run the work on projects more efficiently. This was presented live with an example of a concrete general project of a planning to about 100 visitors. The dramaturgy of the presentation met the demand of a day's business of EPCs: preparation of the project, preparing an offer, layout of the process, basic and detailed engineering, documentation of the working operations and maintenance of the erected plant. It was shown how Cadison can generally support all processes of the engineering workflows.



View in the brand new user interface of Cadison R9.

There is one remark: this complete process chain is prior interesting for the EPC: For instance, if it is only about engineering or design aspects, there is

only an offer for a service to present what covers the process layout and/or the basic engineering. For the customer only the support of processes is essential, which serve for his duties concerning documentation and controlling. Sales director Sebastian Dörr explained how the customer should interpret the presented holistic scenario: "It's right that the process in total is not of interest for any user. Even if he is not forced to start a central data repository. But that is in any case an investment in the future!" That's why the conception of a general workflow is placed in the foreground: Not tools and activities are so much emphasized

Different from big industry

Generally known are the ideas of SAP, concerning which firms to the SMB market belongs: essential is the number of employees and the turnover of the enterprise. But how does that look from the engineering IT point of view? SMB constructors or planning offices employ a person responsible for IT, which is in charge of installation and work of the IT hardware and which is skilled well in the world of MS Windows. But this person has less know-how in specific applications like plant design software. For this 'power users' are gladly called in – but they again are no IT-managers. The needed advice in the case of application is often bought from outside.

www.cadison.com



Photos: ItandFactory

Sebastian Dörr (right), ItandFactory, congratulates Wolfgang Joksch, the winner of an online inquiry initiated by the vendor. Mr Joksch got a voucher for consulting service.

– it is the flow of information between the tools and the work off of the connected duties. The target is that the project in total has to be divided in units, which are rich in meaning. Already today that is done with ERP systems.

Workflow management should be regarded as an important step to a controlled e.g. certified process, which has to be proved by many plant constructors to their customers. For this, especially small and medium business (SMB) market need support not only by the IT system, but also conceptional support. Not only the presentation to the customer profits by this. There are even considerable advantages for what we call an 'interior view'. If the different duties are clearly organized and everybody knows what is his duty, the own processes can be supported more precisely.

Sebastian Swiatczak from Ruland Engineering & Consulting agreed to the presented details in the workshop: "It was inspiring to see how a project can be followed up from the beginning with Cadison." Ruland is just in the pilot phase with Cadison R9 and is indeed planning to use it in a similar intensity. "Some features in the graphical user interface have been clearly changed by the new release. It would be better, to connect it closer to the previous release," Swiatczak said. This may be a hint, that a major-release, of course,

needs a certain time of adaption and a certain training.

Guaranteed increase of quality

There has been invested a long time for the new user surface. For example there are now the additional tool bars 'favourites' and 'users', giving more flexibility to the data access. In the future all settings of a Cadison session will be stored per user and not longer per project. That makes it easier for the user to find his way faster during application.

Drawing up plans can be taken from other projects accelerating new projects considerably. There is a new container assistant. They can be configured from basic elements like the number of feet, calorifier and pipe construction with a few mouse clicks and then be stored in Cadison.

Remarkable was the presentation of the so called Engineering Flow Container. The reason for this is the fact that there are many possibilities to start a project. This is the first step to a comprehensive support of project management strategies. We reported in our last issue that a tie up to the cost calculation and procurement tool PDV-A has been achieved. Furthermore a tie up to MS Project is in the pipeline. Now a defined status can be assigned to a certain user. A better support of collaborated project execution is planned.