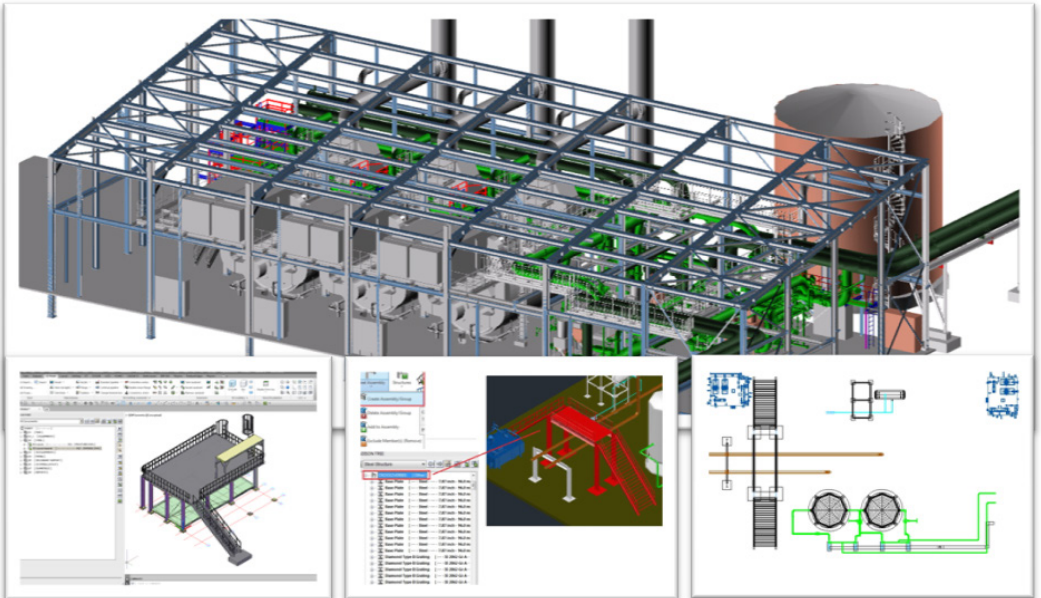


CADISON[®] Steel Layout

A comprehensive tool for planning and creating 3D steel structures (as per the industry standards) efficiently in plant design



A wizard-based tool for creating standard steel structures and custom assemblies. It also has an ability to extract GA drawings of the structures and generate reports for Bill of Material (BOM) and quantities (BOQ). Its SDNF export interface enables user to export steel structure data to Tekla or Advance Steel for further detailing.